

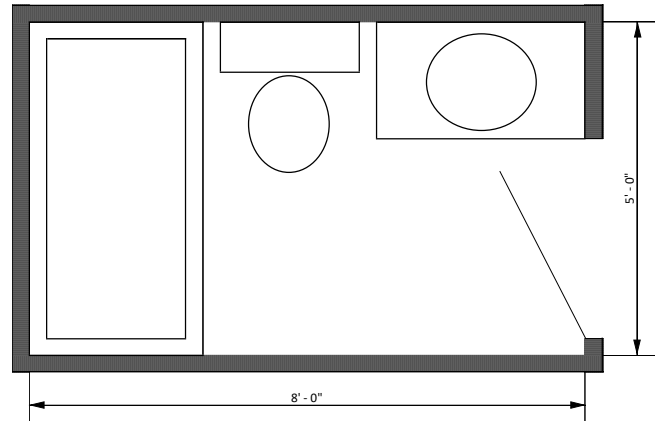
## Room Perimeter


**A. READ, ADD, & RESPOND.** Calculate the perimeter of each room. List your answer in feet plus inches.

**00. EXAMPLE. 4' - 2"**

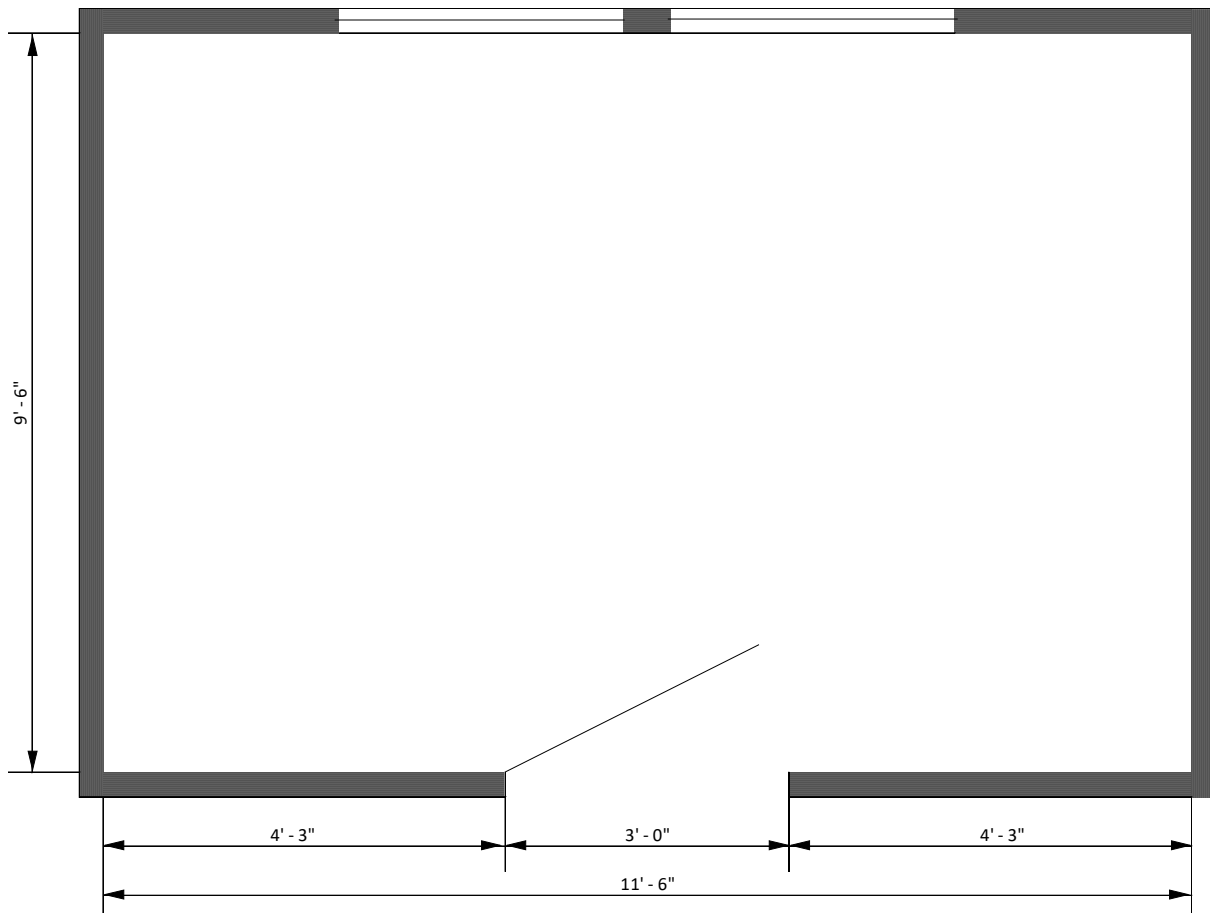
### Bathroom

1. Length \_\_\_\_\_
2. Width \_\_\_\_\_
3. Perimeter \_\_\_\_\_



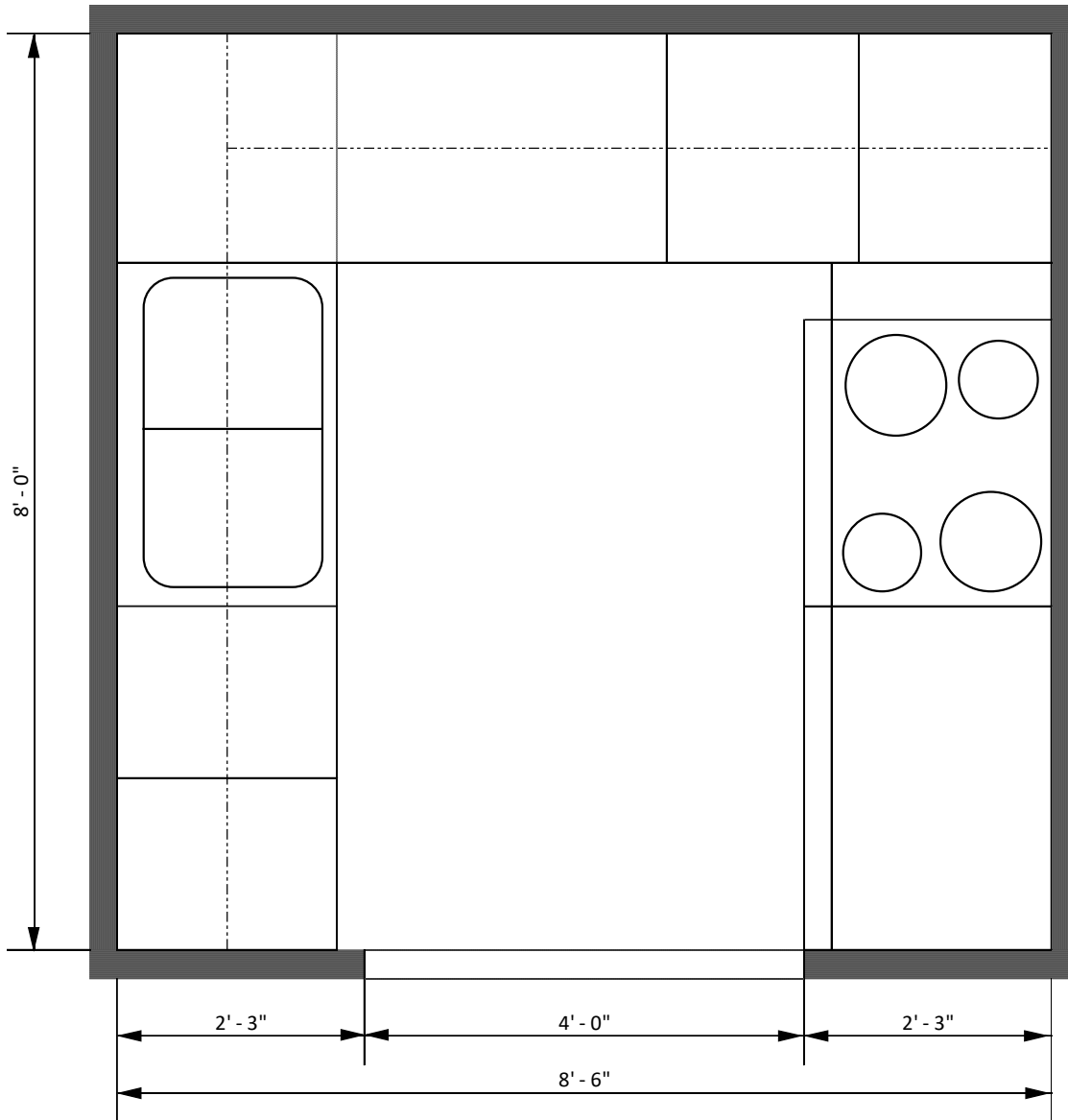
### Small Bedroom

4. Length \_\_\_\_\_
5. Width \_\_\_\_\_
6. Perimeter \_\_\_\_\_



## Kitchen

7. Length \_\_\_\_\_
8. Width \_\_\_\_\_
9. Perimeter \_\_\_\_\_



**B. MULTIPLE CHOICE. Write the letter for the best answer in the space provided.**

\_\_\_\_\_ 10. Baseboard is available in pieces that are 16' - 0" long at Acme Lumber Yard. How many pieces would you have to order for the **bedroom**, above?

- a. 2
- b. 3
- c. 4
- d. 5