

# Carpentry Level One



Introduction to Construction Drawings, Specifications, and Layout 27104-13





# Objectives

List the types of drawings usually included in a set of plans and describe the information found on each type.

- f. List the various types of construction drawings and describe each.



# Performance Task

2. Read and interpret elevation view drawings.

## Kickoff Activity

- Using the interior elevation drawings presented to you, what type of information can be obtained from the drawings? What special features are specified in the drawings?



## Section 1.6.6

- Elevation views provide a view of the side of a structure.
- Typically, elevation views are used to show the exterior features of a structure so the general size and shape of the structure can be determined.



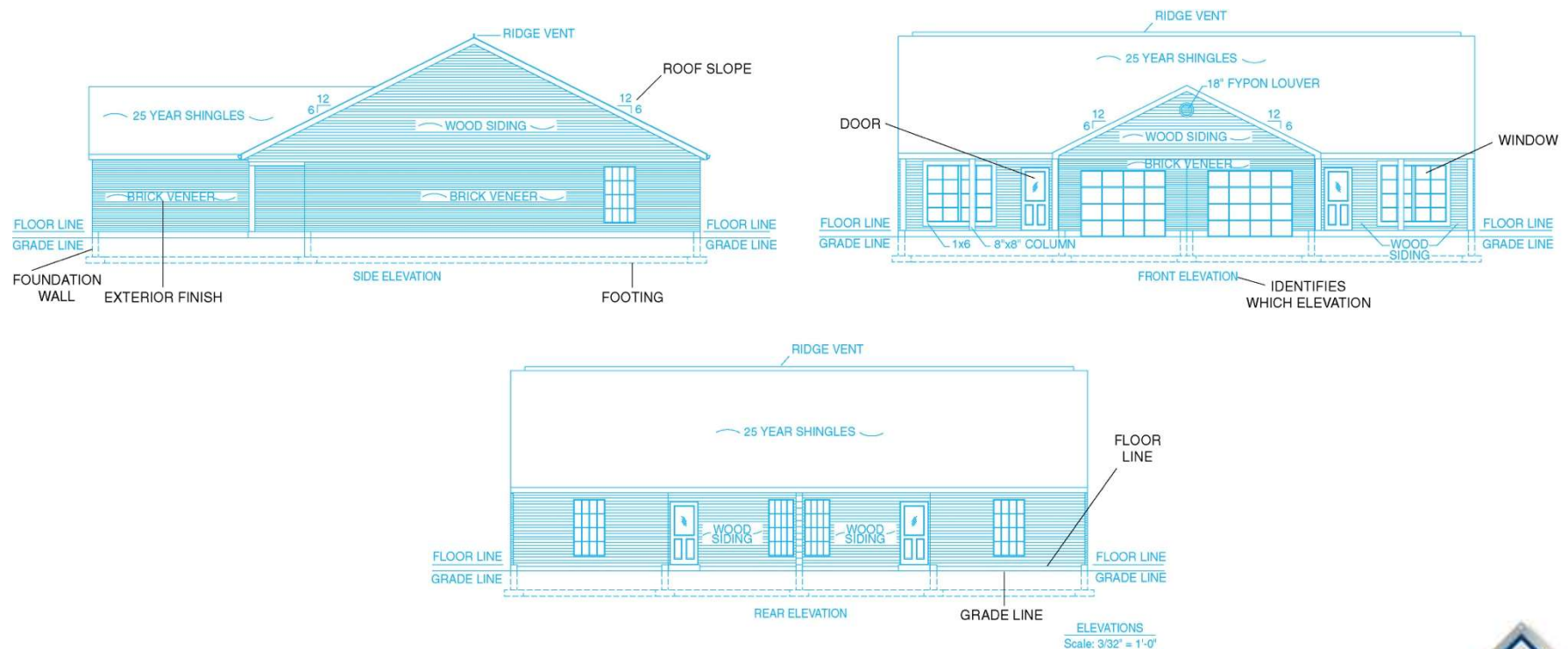
## Section 1.6.6

- Types of information normally shown on elevation drawings include:
  - Grade lines
  - Floor height
  - Window and door types
  - Roof lines and slope, roofing material, vents, gravel stops, and projection of eaves
  - Exterior-finish materials and trim



## Section 1.6.6

- Unless one or more views are identical, four exterior elevation drawings are generally used to show the exterior of a building.



## Section 1.6.6

- Exterior elevation drawings are typically labeled in one of two ways:
  1. They may be labeled as front, right side, left side, and rear.
  2. They may be designated by compass direction.
    - For example, if the front of the building faces north, then this becomes the north elevation.





## Section 1.6.6

- Drawing sets may also include interior elevation drawings for the walls in each partitioned area, especially for walls that have special features such as fireplaces.



## Wrap Up

Using the floor plan and elevation drawings given to you by the instructor, use the elevation drawings to clarify the information on the floor plan.

Next Lesson: Section and Detail Drawings,  
Part One

Review Sections 1.6.7–1.6.11

