

Wall Layout Procedure

A. Plates.

1. Cut & spread out plates.
2. Tack down plates (soleplate and top plate) on floor.

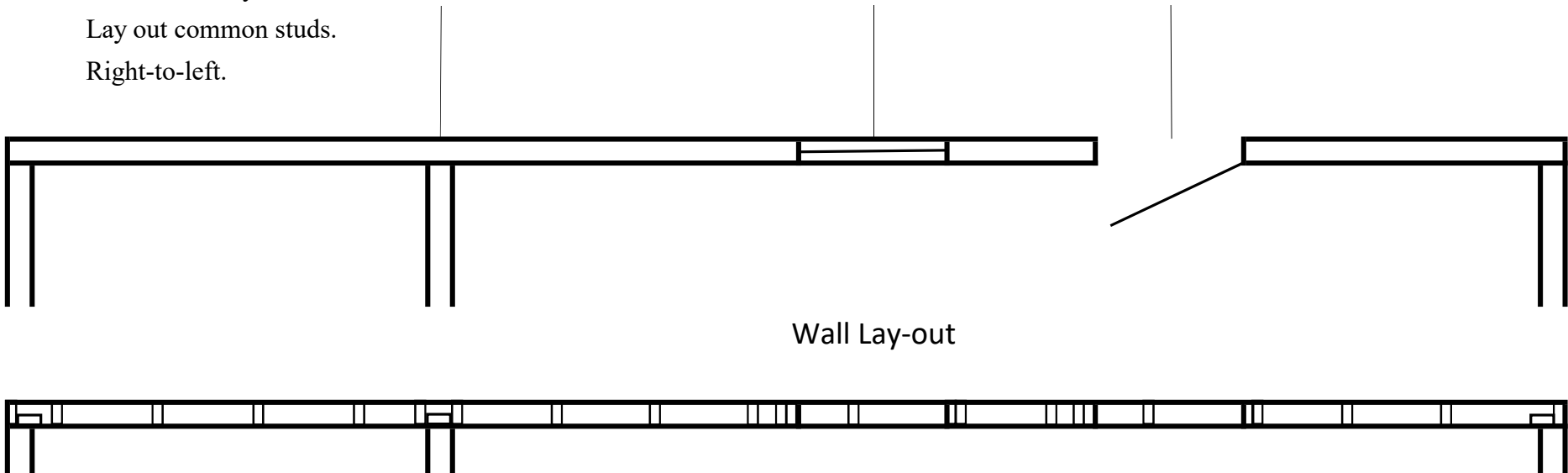
B. Openings/Partitions.

1. Doors and Windows
 - a. Mark C/L and then outlines for doors, windows, and partitions.
 - b. Mark all trimmer studs and king studs for doors and windows.
2. Wall Intersections
 - a. Mark partition tees.
 - b. Mark corner blocks.

Architectural Drawing

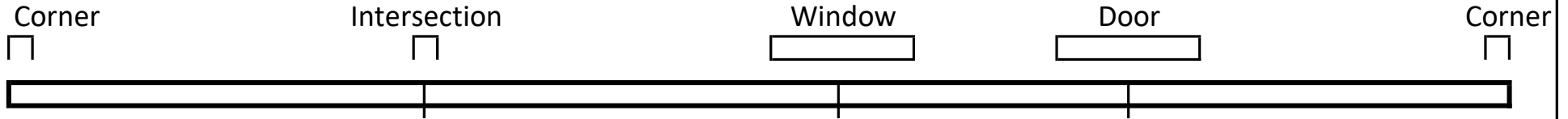
C. Common Stud Lay-out

Lay out common studs.
Right-to-left.

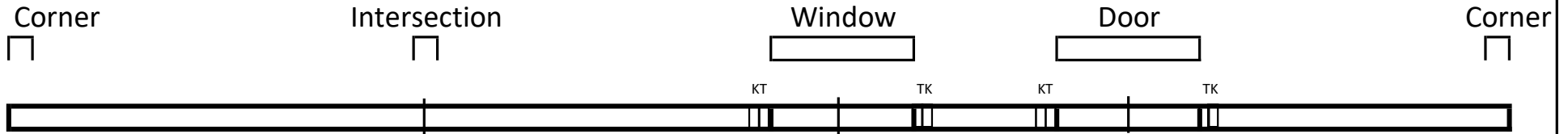


Step-By-Step Procedure

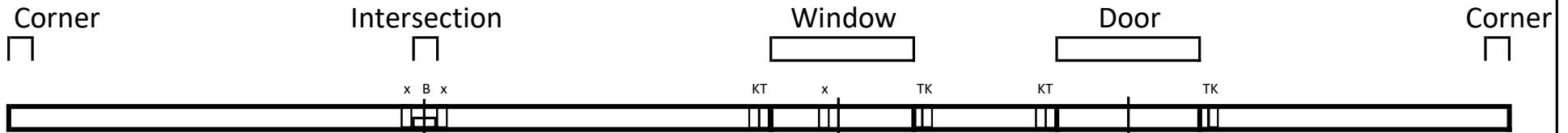
1. a. Mark C/L and then outlines for doors, windows, and partitions.



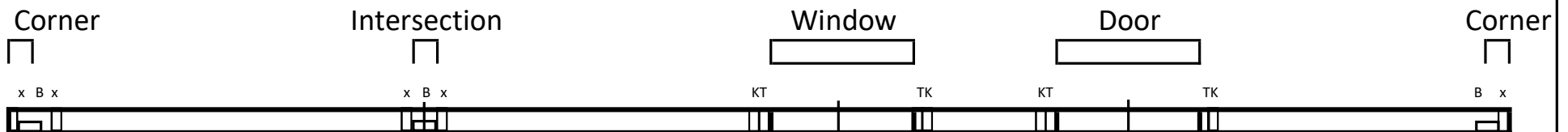
1. b. Mark all trimmer studs and king studs for doors and windows.



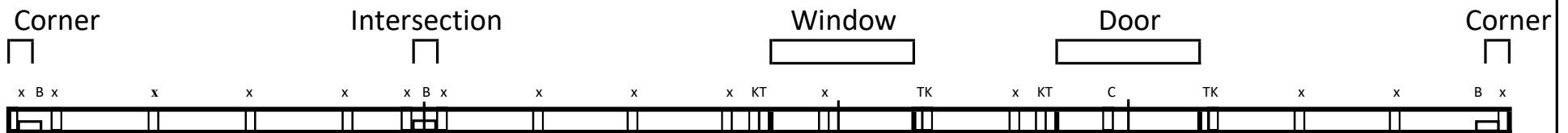
2. a. Mark partition tees.



2. b. Mark corner blocks.



3. Lay out common studs working right-to-left (if you are right-handed).



Note: Studs that fall within window and door openings will be cripples.